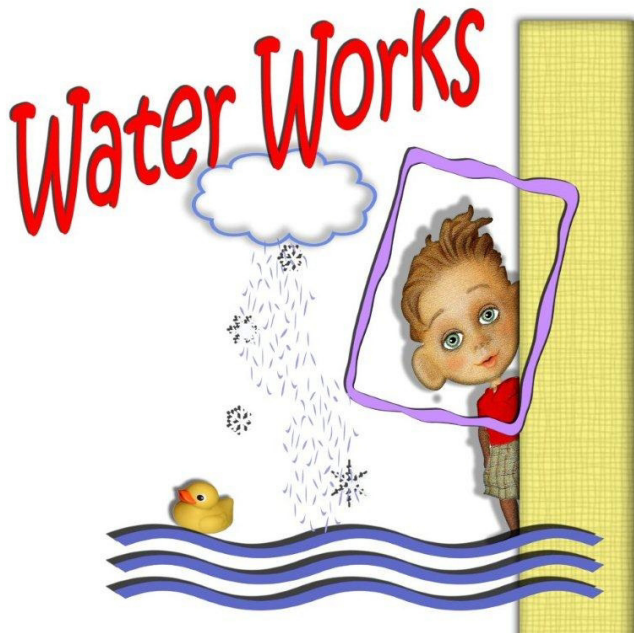




The official newsletter of
San Francisco Bay Area Puppeteers' Guild
Looking for updates and missed information?
Check for it at **SFBAPG.ORG**

SFBAPG is a charter guild of the Puppeteers of America, Inc., a non-profit, tax exempt organization

November 2010



Lee Armstrong and Kamela Portuges present their new show, **Water Works**, at the next guild meeting, November 6, and there will be the

!!!GUILD CHALLENGE!!!

Inside this issue...

- ◆ November Guild Meeting info
- ◆ Independent Eye Review "Hands Up"
- ◆ Little Blue Moon review from Herbert Lange in Germany
- ◆ How to: Giant Patterns from Jesse Vail
- ◆ SF Toy Theatre Exhibit & Calendar



DON'T BE A TURKEY!
GET YOUR GUILD CHALLENGE PIECE READY!

**2010-2011 Board of Directors
and Guild Officers**

President
Conrad Bishop
eye@independenteye.org
707-824-4307

Vice President
Art Grueneberger
PuppetArt@aol.com
916-424-4736

Treasurer
Valerie Nelson
magicalmoonshine@gmail.com
707-363-4573

Secretary
Sharon Clay
sharonlclay@comcast.net
925-462-4518

Membership Officer
Michael Nelson
magicalmoonshine@gmail.com
707-363-4573

Newsletter Editor
Talib Huff
tahuff@dcn.org
916-484-0606

Barbara Grillo
bgrillo@contracosta.edu
510 964-1513

Randal Metz
puppetcomp@aol.com
510-569-3144

Jesse Vail
jessevail@gmail.com
510-672-6900

Librarian
Lee Armstrong
images@vom.com
707-996-9474

Webmaster
Matt Baum
mattymatt@gmail.com

**Next Guild Meeting, November 6 starting at 4 pm.
Contra Costa College Early Learning Center, San Pablo
NEW SHOW FROM IMAGES IN MOTION: 4:30 PM**

“Water Works”

Creative play abounds as a child and a duck splash through the seasons. Water Works is an original show, using a variety of beautifully crafted rod, shadow and hand puppets, presented by the award winning puppet company, Images In Motion.

Images In Motion has been delighting families for over twenty years with their quality puppetry. Corporate clients include Leapfrog, Disney and PBS. Awards include six regional Emmys and 6 national Tellys. More info can be found at www.imagesmedia.com.

Potluck Dinner! Bring something delicious to share!

Guild Challenge!

Yes, you asked for it for months and here it is, a new Guild Challenge! The Challenge this time is TWO-FOLD (and you get to choose.)

Challenge Option 1. Use the puppet you received at the Day of Puppets at Fairyland in August (and if you didn't go, you didn't get a puppet, so try option 2) and create a 30 second to 5 minute skit (you may combine this with option 2, below.)

Challenge Option 2. Using any puppets you want, create a 30 second to 5 minute skit using the following rule: The first words of the skit must be “Time is running out,” and the last line of the skit must be “How did that get on the bottom of my shoe?” Anything in between is up to you.



DIRECTIONS TO THE EARLY LEARNING CENTER AT CONTRA COSTA COLLEGE

!!!GUILD CHALLENGE!!!

From the North - Hwy. 4/I-80 (Sacramento, Martinez, Pinole):

1. Take Hwy. 4 west to I-80.
2. Take I-80 West toward Oakland.
3. From I-80, take the Richmond Parkway Exit. Turn right onto Richmond Parkway and follow it down the hill to San Pablo Avenue (big stoplight intersection).
4. Turn left onto San Pablo Avenue. Follow San Pablo Avenue for about a mile and a half, down the hill, to the fourth stoplight. This will be El Portal Drive; there should be a MacDonalds on the corner.
5. Turn left onto El Portal Drive. Make another left onto Mission Bell Drive (campus entrance).
6. Take Mission Bell drive all the way to a Round-About (with College Welcome Sign). Go half-way around the Round-About and drive up the hill. The Early Learning Center is the first building on the right. Park on the street or in Parking Lot 17 which is the first right turn above/after the Early Learning Center (the ELC's parking lot is reserved for parents).

From the West (San Francisco) or from the South (Oakland, Berkeley, Richmond):

1. Follow I-80 East toward Sacramento, past Berkeley, Albany, El Cerrito and Richmond.
2. Take the El Portal Drive exit. At the end of the off-ramp there is a stoplight. Turn left and go under the freeway. continue on El Portal (you will pass the Knox Performing Arts Center on the right) to the Mission Bell Drive entrance to the campus. (it comes just before San Pablo Avenue).
3. Turn right onto Mission Bell Drive. Take Mission Bell drive all the way to a Round-About (with College Welcome Sign). Go half-way around the Round-About and drive up the hill. The Early Learning Center is the first building on the right. Park on the street or in Parking Lot 17 which is the first right turn above/after the Early Learning Center (the ELC's parking lot is reserved for parents).

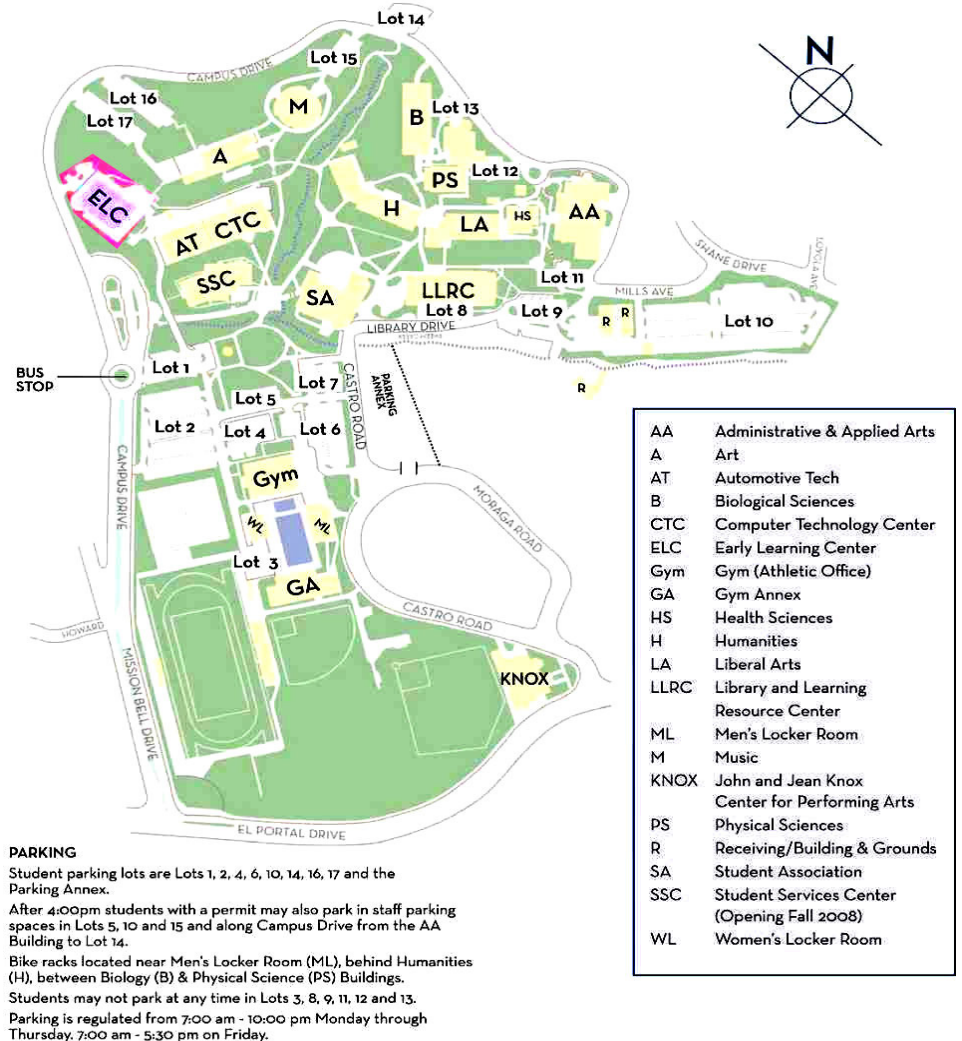
From the East (Walnut Creek, Concord, Lafayette):

1. Take Hwy 24 West, toward Oakland.
2. From Hwy 24, take the Orinda exit, stay to the right and follow the signs toward Richmond.
3. Stay on Camino Pablo through Orinda, past the reservoir and into El Sobrante. (Camino Pablo becomes San Pablo Dam Road by the reservoir.) Continue on San Pablo Dam Road through the shopping district of El Sobrante, to the stoplight at El Portal Drive (there's a Shell gas station on the right).
4. Turn right onto El Portal Drive. Stay on El Portal Drive and go under the freeway, continue on El Portal (you will pass the Knox Performing Arts Center on the right) to the Mission Bell Drive entrance to the campus (it comes just before San Pablo Avenue).
5. Turn right onto Mission Bell Drive. Take Mission Bell drive all the way to a Round-About (with College Welcome Sign). Go half-way around the Round-About and drive up the hill. The Early Learning Center is the first building on the right. Park on the street or in Parking Lot 17 which is the first right turn above/after the Early Learning Center (the ELC's parking lot is reserved for parents).

From the West (over the Richmond-San Rafael Bridge):

1. After you have crossed the bridge, take the Castro Street exit from I-580 East and follow the signs for the Richmond Parkway. Follow the Richmond Parkway for several miles, all the way to San Pablo Avenue (big stoplight intersection).
2. Turn right onto San Pablo Avenue. Follow San Pablo Avenue for about a mile and a half, down the hill, to the fourth stoplight. This will be El Portal Drive; there should be a MacDonalds on the corner.
3. Turn left onto El Portal Drive. Make another left onto Mission Bell Drive.
4. Take Mission Bell drive all the way to a Round-About (with College Welcome Sign). Go half-way around the Round-About and drive up the hill. The Early Learning Center is the first building on the right. Park on the street or in Parking Lot 17 which is the first right turn above/after the Early Learning Center (the ELC's parking lot is reserved for parents).

A map of the campus may be found on the Contra Costa College website: www.contracosta.edu



CONTRA COSTA COLLEGE • 2600 MISSION BELL DRIVE, SAN PABLO, CA 94806 • (510) 235-7800

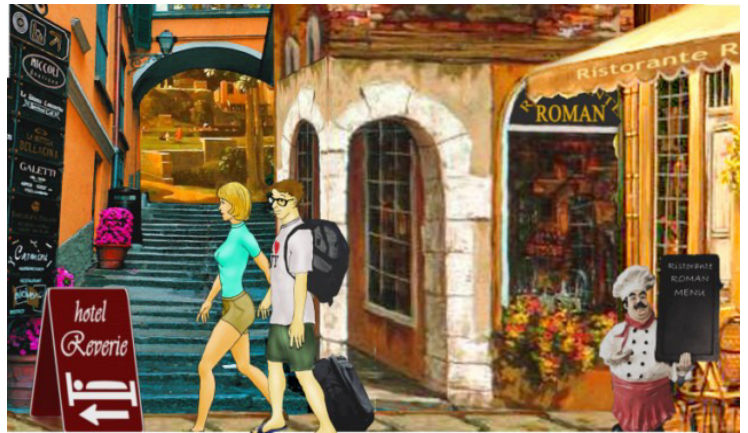
Map of Campus, with Early Learning Center in upper left, marked ELC.

Refreshing American-German Puppetry Connections mixed with Erotic Paper Pleasures in Preetz Herbert Lange (who, now living in Germany, is our most far-flung guild member!)

It was such a delight to reconnect with Michael and Valerie while they were performing their new tailor-made program at the German Preetz Toy Theater festival in September. As usual, the Nelsons showed a dreamlike love story filled with mythological suspense, funny twists and Valerie's clear soprano voice. In their bags, Magical Moonshine brought an exquisite cast of 120 tiny cartoonish paper manikins acting against a backdrop of beautifully shot pictures and copies of classical paintings. Mechanical craftsmanship such as when a swan rose up high into the sky flapping its wings or groups of naked lovers were revolving added to an atmosphere of visual pleasure about to resolve the constraints of two-dimensional sets and characters. Needless to say that Michael and Valerie left enthralled crowds to the erotic aberrations of a young American couple from New York on their honeymoon trip to La Bella Italia. No words were used during the performance except for some airport announcements, but the message was only too clear - Beware of the Roman gods! Fear their sexual appetite that is always so much stronger than any of you unknowing tourists from abroad can imagine – and then the gods may show up in all shapes and colors, as swans, horsemen or seductive mermaids, both on the ground, in the water and in the underworld. You may have fun encountering them and possibly enjoy hours of lust and desire, but in the end they will toss you back into the harsh realm of reality, which means you have to catch your plane back to N. Y. Don't miss your plane back to Europe and Preetz, next year, Michael and Valerie, to give us more of all that. Much, much more.\



Valerie Nelson gives post performance back stage tour, demonstrating figures to German audience members.



Scene from Roman Reverie, performed at the Preetz Toy Theatre Festival by SFBAPG members Michael & Valerie Nelson.



From L in back, guild members Valerie Nelson, Herbert Lange, Michael Nelson, front, Herbert's partner, Martin, outside the festival building.



Back stage view of the slots that the paper puppets slide in for this traditional toy theatre technique.

How to Guide: Jesse Vail demonstrates how to create and enlarge a pattern as he makes a pair of GIANT Converse sneakers.



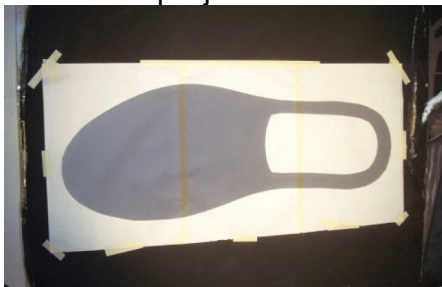
1. Get a shoe and cut one into its separate pieces.



2. Make patterns of those pieces.



3. Place patterns on an over-head projector.



4. Project shape, in the appropriate size, onto a big piece of paper.



5. Use patterns to cut out larger pieces for your Giant Shoes. Then paint and decorate them.



6. Sew, glue, tape those pieces together.



7. Take pictures of them with coffee cup in front for scale.



8. Put actors into them!

Independent Eye “Hands Up“ in Review

Valerie Nelson

“Maybe because it contains a lot of the farcical — whether it's Mr. Punch beating his own puppeteer into submission or two lost souls sharing pet mice, I'm starting to find a kind of joyous ... madness? ... in performing that I think I've aspired to since high school, fifty years back.”

With these words Conrad Bishop describes the process and discovery inherent in “Hands Up!” He and life partner Elizabeth Bishop took us through an evening of grief and regret, lunacy and farce, and finally laughter and wisdom.

Nine separate pieces were presented behind an adjustable horizontal play board and using rod puppets and masks. Their exploration of death and its accompanying confusion, fear and philosophy was made more poignant and courageous by their many years together. One episode has the two actors arguing as if in rehearsal about how to proceed with the story. We feel like we are in their lives.

A skit about a lawyer on his death bed, regretting his work to keep the profits from the original creator of Howdy Doody was fascinating and true. The piece in which Punch has decided to “be nice” and not his usual violent self was hilarious when characters dropped dead right and left despite his efforts. Dark humor abounds as a sweet little character played by a doll is informed by doomsayers (Bishop and Butler in Groucho glasses) that everyone she loves has died. I love their references and explorations of puppetry informed by their years of work in theater. They bring an excitement and sense of the possibilities inherent in puppetry. How else but with puppets can Kali really come to your prom?

Death is always here, just over our shoulders. Independent Eye has turned to look, eye to eye, and report back to us .

Are you a performing puppeteer? Are your services listed on the guild website on the Services page?

<http://www.sfbapg.org/services/>

People listed on these pages get calls, emails and jobs. To get your listing on, send your information and photo to Conrad Bishop at eye@independenteye.org

If you don't have easy access to the internet and still want to be listed, you may send your photo and material to Michael Nelson, Box 1258, Vallejo, CA 94590 and I will format it and send it on to Conrad for you as a free membership benefit!

Independent Eye: Hands Up



Dark humor abounds as a sweet little character played by a doll is informed by doomsayers (Bishop and Butler in Groucho glasses) that everyone she loves has died.



A skit about a lawyer on his death bed, regretting his work to keep the profits from the original creator of Howdy Doody was fascinating and true.

Ongoing Exhibit: Toy Theatres: Worlds in Miniature

Museum of Performance & Design
401 Van Ness Avenue, Suite 402
San Francisco, CA 94102 tel.415-255-4800

Toy Theatres: Worlds in Miniature will transport visitors into enchanted worlds of imagination that appeal both to children and to the child in all of us.

The exhibition features 21 rare toy theaters dating from the 18th century up to the present, drawn from seven different countries including the United States, England, France, Germany, Spain, Denmark and Mexico. Along with the theatres, the exhibition will display printed sheets of scenery and costumed characters and will also feature video excerpts of toy theatre performances.

Toy theatres were miniature paper theatres, utilizing costume and scenery designs derived from the contemporary theatre. Toy theatres had their greatest popularity in the 19th century, and the theatres, scenery and characters were sold in paper sheets, which were then mounted on cardboard, cut up and used for home performances of popular plays of the time, often representing fantastic imaginative settings.

In modern times, with a resurgence of popularity in these magical, miniature worlds, filmmakers as diverse as Terry Gilliam (*The Imaginarium of Doctor Parnassus*), Julie Taymor (*Frida*) and Ingmar Bergman (*Fanny and Alexander*) have been inspired to use toy theatres and paper figures in their films.

Today, toy theatre performances are making a major resurgence at festivals in Europe and the United States, such as the Great Small Works Festival in New York, now celebrating its ninth sold-out year. Current toy theatre artists are crafting new plays created especially for the medium, ranging from traditional family fare to mature subject matter.



NOVEMBER CALENDAR

Storybook Puppet Theatre
Children's Fairyland, Oakland

Nov, 6-7, 13-14, 20-21, 27-28 - 11 am, 2 pm, 4 pm
Cinderella. The beautiful tale of Cinderella makes its debut at Fairyland this month. Set in France at the height of royal fashions, this is the story of a young girl who finds true love with the help of her Fairy Godmother. You will believe in magic as Cinderella thwarts her evil family and wins the love of Prince Charming. The show features the music of the ballet by Serge Prokofiev. Puppets designed and created by William Stewart Jones and Lewis Mahlmann.

Benny & Bebe's Magic Circus

Incredible Magic Hat Show
Nov. 20, 2 p.m.
6300 Civic Terrace Ave. Newark